

HVAC SYMBOL LEGEND

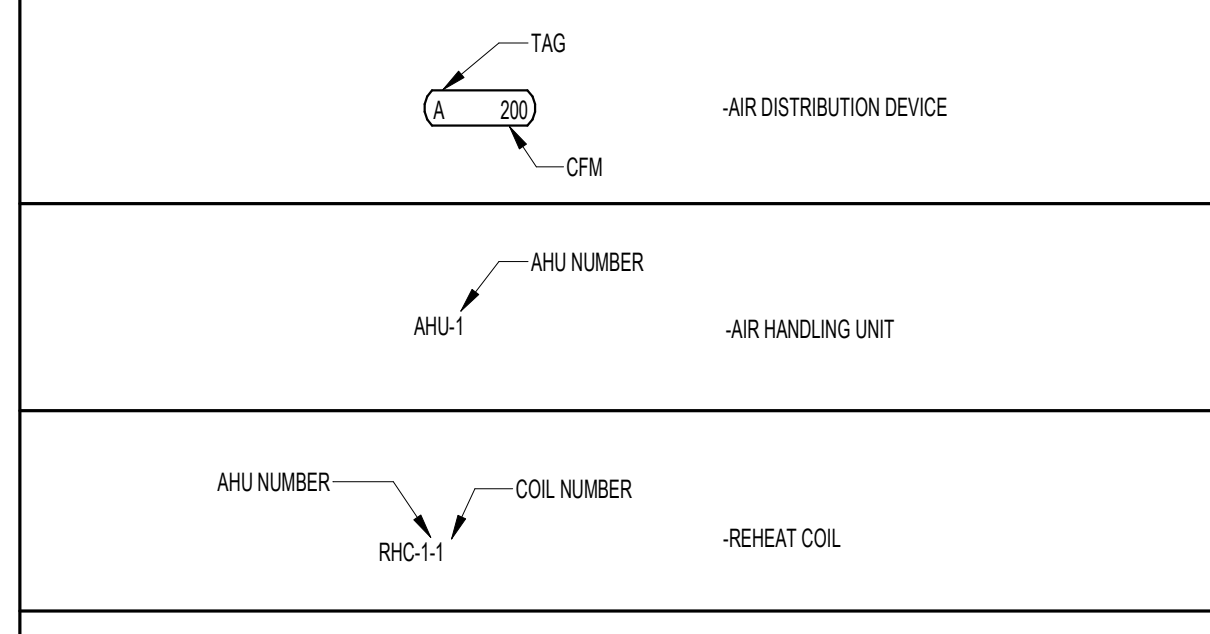
SYMBOL	DESCRIPTION	SYMBOL	DESCRIPTION	SYMBOL	DESCRIPTION
	CEILING DIFFUSER, ROUND NECK (CEILING DIFFUSERS ARE 4-WAY THROW UNO)		FIRE DAMPER (WITH ACCESS PANEL)		TERMINAL UNIT, VARIABLE CONSTANT AIR VOLUME WITH ELECTRIC HEAT
	CEILING RETURN		FIRE & SMOKE DAMPER (WITH ACCESS PANEL)		TERMINAL UNIT, VARIABLE CONSTANT AIR VOLUME WITH ELECTRIC HEAT
	CEILING EXHAUST		EXISTING FIRE DAMPER TO REMAIN		TERMINAL UNIT, VARIABLE CONSTANT AIR VOLUME, FAN POWERED
	CEILING DIFFUSER, RECTANGULAR OR SQUARE NECK (CEILING DIFFUSERS ARE 4-WAY THROW UNO)		EXISTING FIRE & SMOKE DAMPER TO REMAIN		TERMINAL UNIT, VARIABLE CONSTANT AIR VOLUME, FAN POWERED, WITH ELECTRIC HEAT
	SUPPLY REGISTER OR GRILLE (VERTICAL MOUNT, SIDEWALL)		SOUND ATTENUATOR		TERMINAL UNIT, VARIABLE CONSTANT AIR VOLUME, FAN POWERED, WITH ELECTRIC HEAT
	RETURN EXHAUST REGISTER OR GRILLE (VERTICAL MOUNT, SIDEWALL)		MOTOR OPERATED CONTROL DAMPER (MOC)		ELECTRIC DUCT HEATER (W/ PANEL CLEARANCE)
	REVISION REFERENCE		AIR FLOW MEASURING STATION		ELECTRIC DUCT HEATER (W/ PANEL CLEARANCE)
	DETAIL REFERENCE, TOP-DETAIL, BOTTOM DRAWING SHOWN ON		MANUAL BALANCING DAMPER		HYDRONIC REHEAT COIL
	THERMOSTAT/TEMPERATURE SENSOR		DOOR GRILLE		IN-LINE CENTRIFUGAL FAN
	HUMIDISTAT/HUMIDITY SENSOR		UNDERCUT DOOR		PACKAGED TERMINAL AIR CONDITIONER (PTAC)
	DUCT SMOKE DETECTOR		ACCESS DOORS, VERTICAL OR HORIZONTAL		CHANGE OF ELEVATION
	CONNECT TO EXISTING		STAINLESS STEEL DUCTWORK		FLEXIBLE DUCT
	DEMOLISH TO POINT INDICATED		FLEXIBLE CONNECTION		TRANSITION, CONCENTRIC
	SHEET NOTE CALLOUT		FLAT OVAL DUCT		TRANSITION, ECCENTRIC
	CEILING MOUNTED ACCESS DOOR		NEW DUCTWORK, FIRST DIMENSION IS SIDE SHOWN		TRANSITION, SQUARE TO ROUND
			EXISTING DUCTWORK TO REMAIN		SQUARE THROAT TEE
			EXISTING DUCTWORK TO BE REMOVED		RADIUS TEE
			DUCT ELBOW, POSITIVE PRESSURE (SUPPLY), FIRST DIMENSION INDICATES SIDE TO WHICH ARROW IS POINTING		RECTANGLE-TO-ROUND TAKE-OFF
			DUCT ELBOW, EXHAUST		STANDARD BRANCH TAKE-OFF
			DUCT ELBOW, NEGATIVE PRESSURE, RETURN		SPIN-IN TAKE-OFF
			DUCT ELBOW UP THROUGH ROOF OR SLAB ABOVE		SQUARE THROAT ELBOW WITH TURNING VANES
			RECTANGULAR DUCT SECTION UP, POSITIVE PRESSURE, SUPPLY OR OUTSIDE AIR		RADIUS ELBOW
			RECTANGULAR DUCT SECTION UP, NEGATIVE PRESSURE, RETURN		RECTANGULAR/ROUND BRANCH TAKE-OFF OR ROUND/ROUND BRANCH TAKE-OFF
			RECTANGULAR DUCT SECTION UP, EXHAUST		
			ROUND DUCT SECTION UP		
			FLAT OVAL DUCT SECTION UP		

HVAC ABBREVIATIONS

SYMBOL	DESCRIPTION	SYMBOL	DESCRIPTION
AFD	-ADJUSTABLE FREQUENCY DRIVE	LD	-LINEAR DIFFUSER
AFF	-ABOVE FINISHED FLOOR	MBH	-THOUSAND BTU PER HOUR
AFR	-ABOVE FINISHED ROOF	MCA	-MINIMUM CIRCUIT AMPS
AHU	-AIR HANDLING UNIT	MOC	-MAXIMUM OVER CURRENT PROTECTION
AP	-ACCESS PANEL	MOD	-MOTOR OPERATED CONTROL DAMPER (MOC)
BOP	-BOTTOM OF PIPE	NC	-NORMALLY CLOSED
BHP	-BRAKE HORSEPOWER	NO	-NORMALLY OPEN
BTU	-BRITISH THERMAL UNIT	NTS	-NOT TO SCALE
CL	-CENTER LINE	OA	-OUTSIDE AIR
CFM	-CFM (CUBIC FEET PER MINUTE)	OAL	-OUTSIDE AIR LOUVER
CD	-CEILING DIFFUSER	PRV	-PRESSURE REDUCING VALVE
CT	-COOLING TOWER	PRS	-PRESSURE REDUCING STATION
CV	-CONSTANT AIR VOLUME	PSI	-POUNDS PER SQUARE INCH
ΔP	-CHANGE IN PRESSURE	PSIG	-PSI GAUGE
ΔT	-CHANGE IN TEMPERATURE	PTAC	-PACKAGED TERMINAL AIR CONDITIONER
CFM	-CUBIC FEET PER MINUTE	PVC	-POLYVINYL CHLORIDE PIPE
CJ	-CONDENSING UNIT	RA	-RETURN AIR
DDC	-DIRECT DIGITAL CONTROLS	RHC	-REHEAT COIL
DN	-DOWN	RHP	-ROOFTOP HEAT PUMP
EAT	-ENTERING AIR TEMPERATURE	RPM	-REVOLUTIONS PER MINUTE
ESP	-EXTERNAL STATIC PRESSURE	RSL	-REFRIGERANT SUCTION & LIQUID LINES
EWT	-ENTERING WATER TEMPERATURE	RTU	-ROOFTOP AIR HANDLING UNIT
FCU	-FAN COIL UNIT	SA	-SUPPLY AIR
FLA	-FIRE DAMPER	SP	-STATIC PRESSURE
FF	-FINAL FILTERS	TSP	-TOTAL STATIC PRESSURE
FLA	-FULL LOAD AMPS	UNO	-UNLESS NOTED OTHERWISE
FPM	-FEET PER MINUTE	VPH	-VOLTS/PHASE
GPM	-GALLONS PER MINUTE	VAV	-VARIABLE AIR VOLUME
KW	-KILOWATT	VFD	-VARIABLE FREQUENCY DRIVE
LAT	-LEAVING AIR TEMPERATURE		
LWT	-LEAVING WATER TEMPERATURE		

- ### HVAC GENERAL NOTES
- CONNECTION TO EQUIPMENT SHALL BE VERIFIED WITH MANUFACTURER'S CERTIFIED DRAWINGS. TRANSITIONS TO ALL EQUIPMENT SHALL BE VERIFIED AND PROVIDED FOR EQUIPMENT FURNISHED.
 - DIMENSIONS SHALL BE FIELD VERIFIED AND COORDINATED PRIOR TO PROCUREMENT OR FABRICATION. COORDINATE THE WORK WITH OTHER TRADES INVOLVED. FIELD MODIFICATIONS SUCH AS OFFSETS IN PIPING OR DUCTWORK INCLUDING DIVIDED DUCTWORK NEEDED DUE TO OBSTRUCTIONS OR INTERFERENCES SHALL BE PROVIDED AT NO ADDITIONAL COST. FOR PROJECTS INVOLVING RENOVATION, COORDINATE NEW WORK WITH EXISTING ELEMENTS SUCH AS THE BUILDING STRUCTURE AND ARCHITECTURAL FEATURES, SPRINKLER PIPING, LIGHTS, PLUMBING, AND ELECTRICAL CONDUIT.
 - DUCT CONSTRUCTION SHALL BE IN ACCORDANCE WITH THE LATEST EDITION OF THE SMACNA HVAC DUCT CONSTRUCTION STANDARD.
 - SEE SPECIFICATIONS FOR GAUGES, THICKNESS, BRACING, REQUIREMENTS, ETC. OF DUCTWORK.
 - PROVIDE AIR TURNING VANES IN ALL 90 DEGREE RECTANGULAR DUCT ELBOWS.
 - DUCT SIZES AND ALL OPENINGS THROUGH BUILDING CONSTRUCTION SHALL SUIT EQUIPMENT FURNISHED.
 - COORDINATE DIFFUSER, GRILLE AND REGISTER LOCATIONS WITH ARCHITECTURAL REFLECTED CEILING PLANS AND EQUIPMENT OF ALL TRADES.
 - LOCATE THERMOSTATS, TEMPERATURE SENSORS, HUMIDISTATS, AND HUMIDITY SENSORS AT 5' ABOVE FINISHED FLOOR UNLESS NOTED OTHERWISE. COORDINATE LOCATIONS WITH OTHER EQUIPMENT, FURNITURE, AND DOOR SWINGS.
 - ALL EQUIPMENT, DUCTWORK, ETC. SHALL BE SUPPORTED AS DETAILED AND/OR SPECIFIED. PROVIDE ADDITIONAL SUPPORTS AS REQUIRED TO PROVIDE A VIBRATION-FREE, RIGID INSTALLATION.
 - ALL DUCT SIZES SHOWN ARE INSIDE CLEAR DIMENSIONS.
 - DAMPERS AND INSIDES OF DUCTS VISIBLE THROUGH GRILLES, REGISTERS AND DIFFUSERS SHALL BE PAINTED FLAT BLACK.
 - REFER TO TYPICAL DETAILS FOR PIPING AND INSTALLATION OF EQUIPMENT.
 - TRAPPED CONDENSATE DRAINS FROM ALL MECHANICAL EQUIPMENT SHALL BE PROVIDED FOR PROPER DRAINAGE TO SUIT EQUIPMENT FURNISHED.
 - ALL DUCTWORK AND PIPING IS SHOWN SCHEMATICALLY. PROVIDE ALL TRANSITIONS, TURNING VANES, ELBOWS, FITTINGS, ETC. TO ALLOW SMOOTH FLOWS. ALL SPLIT DUCT FITTINGS SHALL TRANSITION TO FULL SIZE OF THE SUM OF BOTH BRANCHES, UPSTREAM OF SPLIT.
 - VERIFY FINISH WITH ARCHITECT PRIOR TO PURCHASING GRILLES, REGISTERS, DIFFUSERS, LOUVERS AND OTHER AIR DISTRIBUTION DEVICES.
 - PROVIDE FLEXIBLE DUCT CONNECTIONS ON ALL DUCTWORK CONNECTING TO EACH FAN, AIR HANDLING UNITS, AND FAN COIL UNITS.
 - PROVIDE TRANSITIONS AT DIFFUSER NECKS AS REQUIRED TO MATCH SIZES OF FLEX DUCTS TO BE CONNECTED.
 - ALL EQUIPMENT, DUCTWORK, ETC., TO BE REMOVED SHALL REMAIN PROPERTY OF THE OWNER OR DISPOSED OF LEGALLY, AS DIRECTED BY OWNER.
 - MAINTAIN CLEARANCE OF A MINIMUM OF 6" BETWEEN DUCTWORK, PIPING, EQUIPMENT, ETC. AND ALL FIRE RATED AND FIRE-SMOKE RATED PARTITIONS, TO ALLOW FOR INSPECTIONS OF RATED WALLS.
 - LOCATE ALL OUTSIDE AIR INTAKES A MINIMUM OF 10' CLEAR FROM ALL PLUMBING VENTS AND EXHAUST AIR DISCHARGE LOCATIONS.
 - DUCT RUNOUTS TO DIFFUSERS SHALL MATCH THE SIZE OF THE DIFFUSER NECK.
 - UNLESS OTHERWISE NOTED, ALL EQUIPMENT AND VALVE DRAINS SHALL BE INDEPENDENTLY PIPED FULL SIZE TO THE NEAREST PLUMBING DRAIN.

HVAC EQUIPMENT TAGS



HVAC DRAWING INDEX

SHEET	DESCRIPTION
M001	MECHANICAL LEGENDS, NOTES AND ABBREVIATIONS
M101	MECHANICAL DEMOLITION - ROOF PLAN
M201	MECHANICAL NEW WORK - 1ST FLOOR PLAN
M202	MECHANICAL NEW WORK - ROOF PLAN
M301	MECHANICAL SCHEDULES
M401	MECHANICAL CONTROLS
M501	MECHANICAL DETAILS

COMPLIANCE STATEMENT

THESE PLANS HAVE BEEN PREPARED IN ACCORDANCE WITH THE FLORIDA BUILDING CODE 8TH EDITION (2023) BUILDING, THE FLORIDA BUILDING CODE 8TH EDITION (2023) MECHANICAL, AND THE FLORIDA BUILDING CODE 8TH EDITION (2023) ENERGY CONSERVATION.

SCHENKELSHULTZ
ARCHITECTURE

200 E. Robinson Street
Suite 300
Orlando, FL 32801
voice 407-872-3322
fax 407-872-3303
schenkelsultz.com
SS Lic. No. AA-C000937

CONFIDENTIAL. COPYRIGHT 2023 SCHENKEL & SHULTZ INC. SEE WWW.SCHENKELSHULTZ.COM FOR POLICY AND INFORMATION.

TLC ENGINEERING
REGISTERED PROFESSIONAL ENGINEER

4890 W. Kennedy Blvd., Suite 250
Tampa, FL 33609
P 813.637.0110

COA 15
www.tlc-engineers.com
TLC No. 719062

THINK. LISTEN. CREATE.

SEAL

OLIVER W. SLIVA
LICENSEE
No. 86542
STATE OF FLORIDA
PROFESSIONAL ENGINEER

05/07/2024

REVISIONS		
MARK	DESCRIPTION	DATE

NORTH ROAD TERMINAL RENOVATION 2024

500 TERMINAL DRIVE
NAPLES, FL 34104

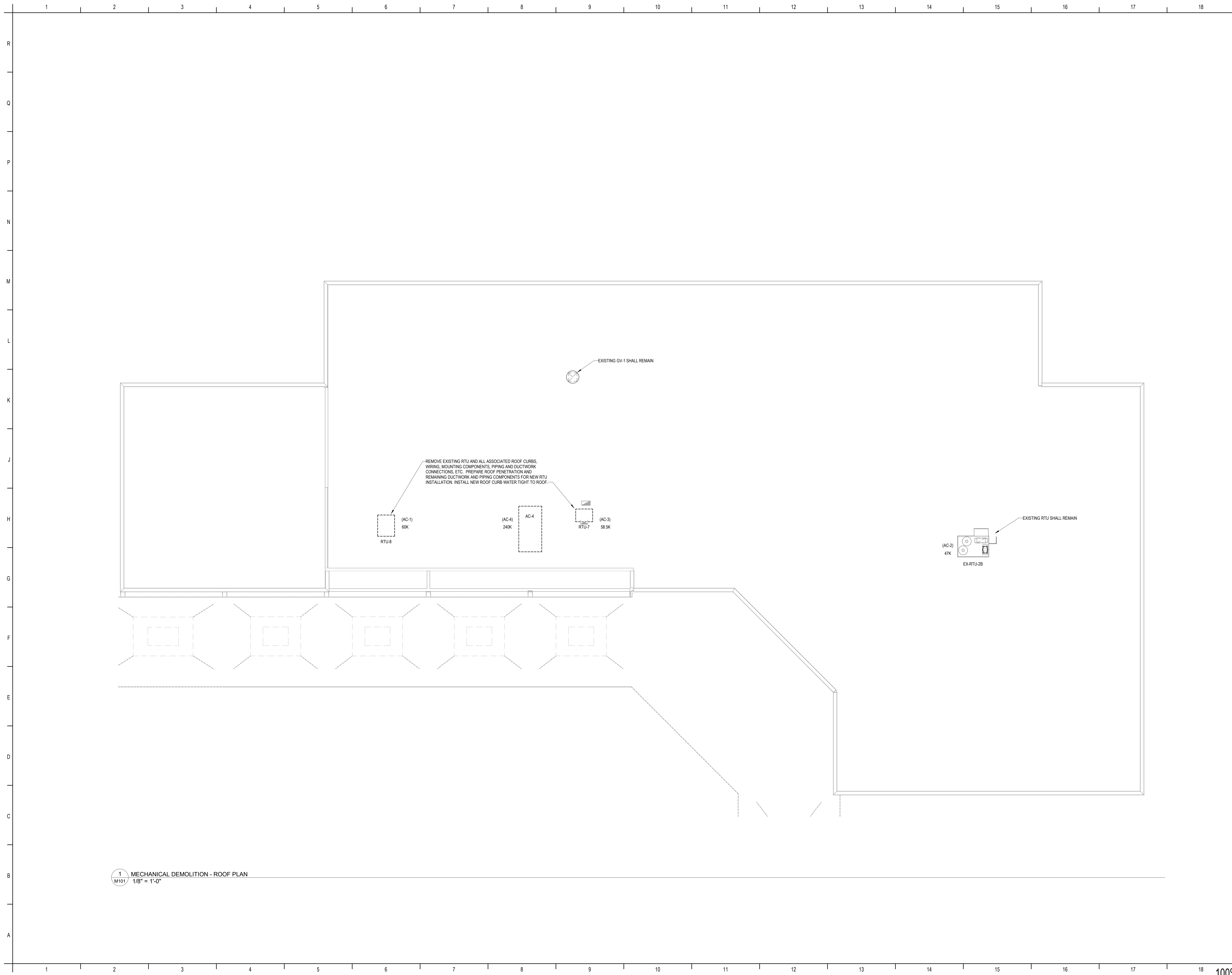
Naples AIRPORT AUTHORITY

NAPLES AIRPORT AUTHORITY
160 AVIATION DRIVE NORTH
NAPLES, FL 34104

COMM. NO.: 2024701
ISSUE DATE: 05/07/2024
DRAWN BY: KMC CHECKED BY:

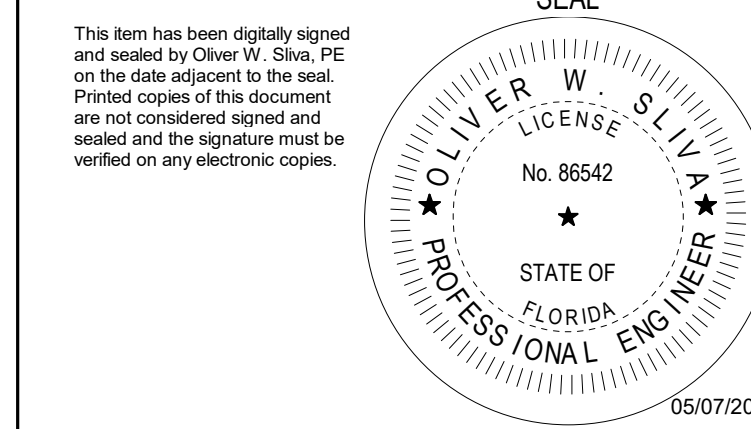
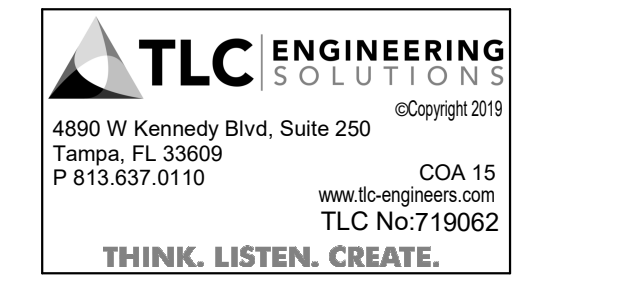
MECHANICAL LEGENDS, NOTES AND ABBREVIATIONS

M001



SCHENKELSHULTZ
ARCHITECTURE

200 E. Robinson Street
Suite 300
Orlando, FL 32801
voice 407-872-3322
fax 407-872-3303
schenkelshultz.com
SS Lic. No. -AA-C000937
CONFIDENTIAL COPYRIGHT 2023 SCHENKEL & SHULTZ INC.
SEE WWW.SCHENKELSHULTZ.COM/COPYRIGHT FOR POLICY AND INFORMATION



REVISIONS		
MARK	DESCRIPTION	DATE

NORTH ROAD TERMINAL RENOVATION 2024

500 TERMINAL DRIVE
NAPLES, FL 34104

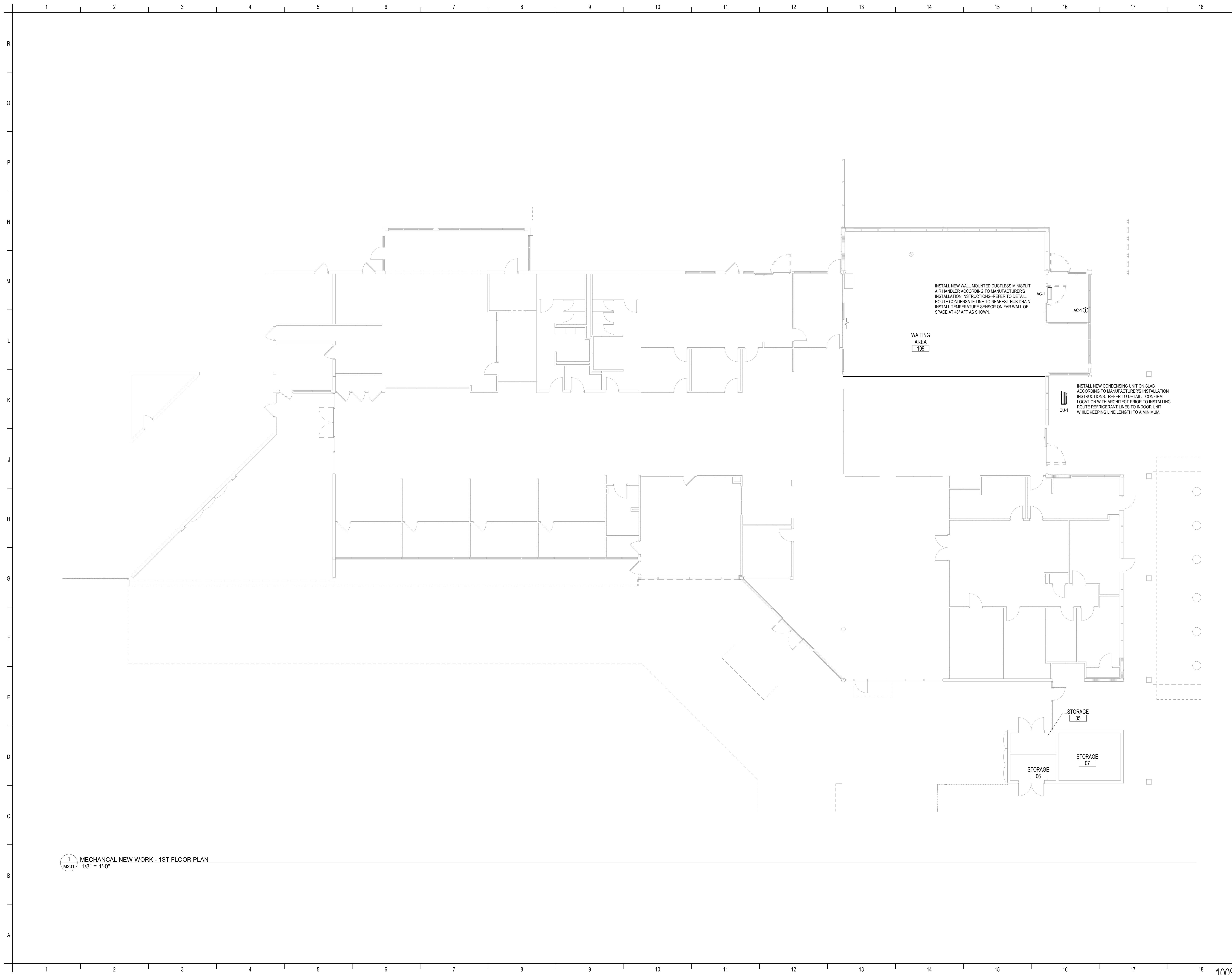


NAPLES AIRPORT AUTHORITY
160 AVIATION DRIVE NORTH
NAPLES, FL 34104

COMM. NO.: 2024701
ISSUE DATE: 05/07/2024
DRAWN BY: KMC CHECKED BY:

MECHANICAL DEMOLITION - ROOF PLAN

M101



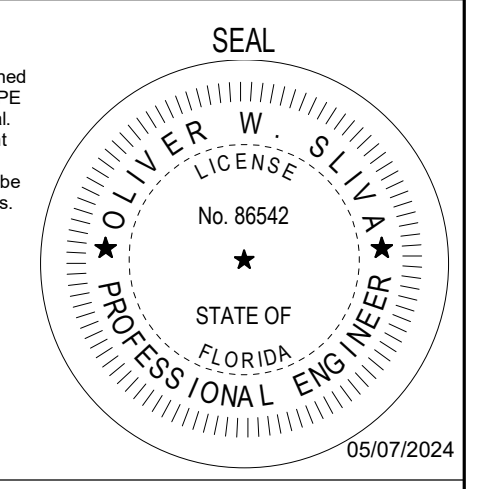
1 MECHANICAL NEW WORK - 1ST FLOOR PLAN
 M201 1/8" = 1'-0"

SCHENKELSHULTZ
 ARCHITECTURE

200 E. Robinson Street
 Suite 300
 Orlando, FL 32801
 voice 407-872-3322
 fax 407-872-3303
 schenkelshultz.com
 SS Lic. No. AA-C000937
 CONFIDENTIAL COPYRIGHT 2024 SCHENKEL & SHULTZ INC.
 SEE WWW.SCHENKELSHULTZ.COM FOR POLICY AND INFORMATION



This item has been slightly signed and sealed by Oliver W. Sliva, PE on the date adjacent to the seal. Printed copies of this document are not considered signed and sealed and the signature must be verified on any electronic copies.



REVISIONS		
MARK	DESCRIPTION	DATE

**NORTH ROAD TERMINAL
 RENOVATION 2024**

500 TERMINAL DRIVE
 NAPLES, FL 34104

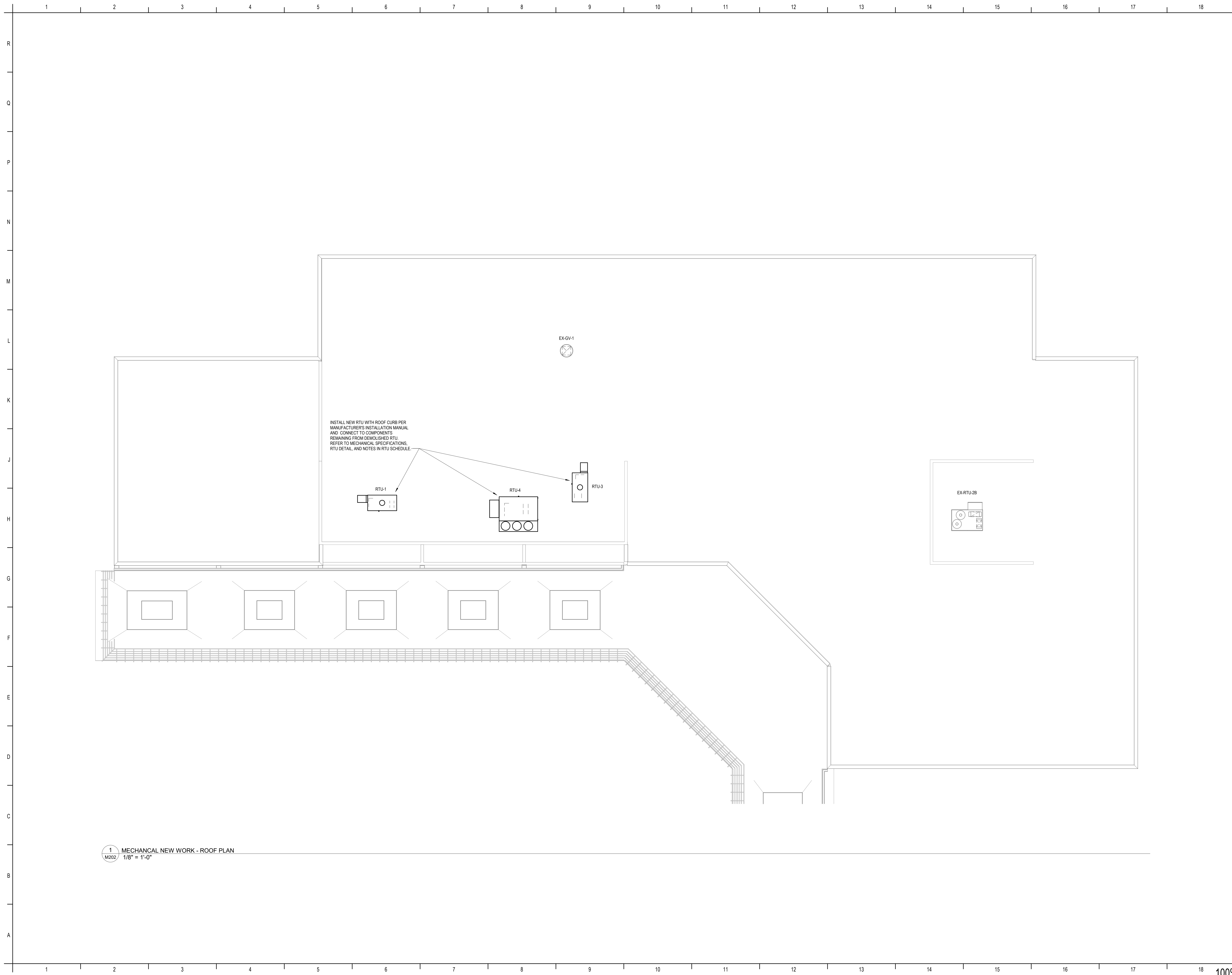


NAPLES AIRPORT AUTHORITY
 160 AVIATION DRIVE NORTH
 NAPLES, FL 34104

COMM. NO.: 2024701
 ISSUE DATE: 05/07/2024
 DRAWN BY: KMC CHECKED BY:

**MECHANICAL NEW WORK - 1ST
 FLOOR PLAN**

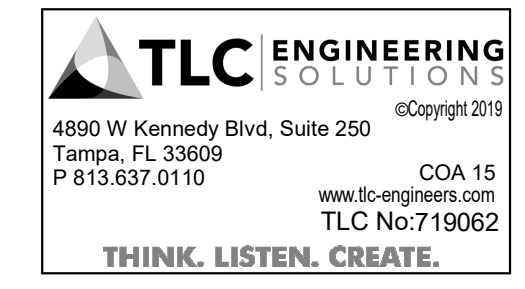
M201



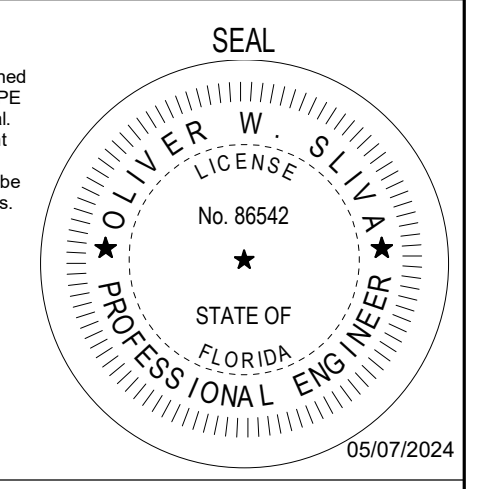
1 MECHANICAL NEW WORK - ROOF PLAN
 M202 1/8" = 1'-0"

SCHENKELSHULTZ
 ARCHITECTURE

200 E. Robinson Street
 Suite 300
 Orlando, FL 32801
 voice 407-872-3322
 fax 407-872-3303
 schenkelshultz.com
 SS Lic. No. -AA-C000937
 CONFIDENTIAL COPYRIGHT 2023 SCHENKEL & SHULTZ INC.
 SEE WWW.SCHENKELSHULTZ.COM/COPYRIGHT FOR POLICY AND INFORMATION



This item has been slightly signed and sealed by the State of Florida. Printed copies of this document are not considered signed and sealed and the signature must be verified on any electronic copies.



REVISIONS		
MARK	DESCRIPTION	DATE

**NORTH ROAD TERMINAL
 RENOVATION 2024**

500 TERMINAL DRIVE
 NAPLES, FL 34104



NAPLES AIRPORT AUTHORITY
 160 AVIATION DRIVE NORTH
 NAPLES, FL 34104

COMM. NO.: 2024701
 ISSUE DATE: 05/07/2024
 DRAWN BY: KMC CHECKED BY:

**MECHANICAL NEW WORK -
 ROOF PLAN**

M202

RTU SINGLE ZONE DX/EH SCHEDULE

MARK	MOEEL	TYPE	AIRFLOW (CFM)			MIN. TONS	FAN DATA				CONDENSER FAN QTY	COOLING COIL DATA						HEATING COIL DATA				HOT GAS BYPASS HEATING COIL DATA				ELECTRICAL DATA				WEIGHT (LB)	NOTES									
			SA	OA	MIN SA		ESP (IN WC)	RPM	MOTOR HP	VFD		EAT (° F)		LAT (° F)		CAPACITY (kBtu/h)		AIR DATA		AIR TEMP (° F)		AMBIENT TEMP (° F)		SEER	CAPACITY (kBtu/h)	AIR PD	EAT (° F)		LAT (° F)			COMPRESSOR DATA		UNIT DATA						
												DB	WB	DB	WB	TOT	SEN	MAX FPM	PD (IN WC)	EAT (DB)	LAT (DB)	MAX FPM	PD (IN WC)				kw	REF	DB			WB	SEER	QTY	FLA	MCA	MGP	VOLTS	PHASE	INDOOR
RTU-1	VX-12-4I-1-G1	PSZ	1800	360	960	2.5	1.5	1750	1.5	Yes	1	78.8	64.3	55.0	54.9	64.0	48.0	500	0.25	58.5	84.0	500	0.25	10.9	R410A	95.0	55.0	14.0	30.9	0.20 in-wg	45.0	60.0	1	45.6	57.0	60.0	208	3	1,100	1-24
RTU-3	VX-12-6I-1-G1	PSZ	1600	320	825	2.5	1.5	1750	0.75	Yes	1	78.8	64.3	55.0	54.9	58.5	44.0	500	0.25	58.5	84.0	500	0.25	7.5	R410A	95.0	55.0	13.0	26.9	0.20 in-wg	45.0	60.0	1	47.6	59.5	60.0	208	3	1,150	1-24
RTU-4	VX-212-20I-1-G1	PSZ	7500	1500	3,750	12.0	1.5	1750	6.33	Yes	3	78.8	64.3	55.0	54.9	240.0	180.0	500	0.25	58.5	84.0	500	0.25	60.0	R410A	95.0	55.0	11.2	122.3	0.20 in-wg	45.0	60.0	2	179.7	184.8	200.0	208	3	3,300	1-24

NOTES:
1. BASIS OF DESIGN IS TRANE.
2. COOLING CAPACITIES SHOWN ARE REQUIRED MINIMUMS AND DO NOT ACCOUNT FOR FAN HEAT.
3. MAXIMUM FPM PER INCH SHALL BE 10 FOR COOLING COILS. MINIMUM NUMBER OF ROWS 6.
4. FACE VELOCITIES INDICATED ON SCHEDULE ARE MAXIMUM ALLOWABLE. UNIT MODULE SIZES SHALL MATCH THOSE LISTED.
5. UNIT CASING TO BE DOUBLE WALL FOAM INJECTED PANEL CONSTRUCTION WITH R-13 THERMAL RESISTANCE.
6. UNIT SHALL BE BUILT WITH BASE INSULATION.
7. UNIT TO BE COATED WITH 2,500 HR ASTM B117-95 SALT SPRAY RATED COATING.
8. UNIT TO INCLUDE MODULATING OUTSIDE AND RETURN AIR DAMPERS.
9. 115V CONVENIENCE OUTLET VIA JUNCTION BOX TO BE FACTORY WIRED FOR SINGLE POINT POWER.
10. PROVIDE WITH 2" PLEATED MERV 8 PRE-FILTERS AND 4" CARTRIDGE MERV 13 FINAL FILTERS.
11. UNIT MOUNTED NON-FUSED DISCONNECT.
12. PROVIDE CONDENSER AND EVAPORATOR COILS WITH BAKED ON PHENOLIC COATING, WITH 5,000 HR SALT SPRAY RATING.
13. PHASE AND BROWNOUT PROTECTION.
14. UNIT TO BE PROVIDED WITH FACTORY MOUNTED BACKET CONTROLLER, TO BE SET UP FOR VARIABLE AIR VOLUME CONTROL.
15. MOUNT UNIT ON 24" ROOF CURB.
16. PROVIDE MOTOR SHAFT GROUNDING AND VFD INVERTER DUTY MOTOR.
17. FAN PERFORMANCE SHALL BE BASED ON FINAL PRESSURE DROP OF 0.8 INCHES FOR MERV 8 FILTERS.
18. PROVIDE FACTORY INSTALLED DIFFERENTIAL PRESSURE GAUGES FOR DIRTY FILTER STATUS, ONE PER FILTER, TYPICAL FOR ALL COILS.
19. ALL OUTSIDE AIR COILS SHALL BE COATED PER SPECIFICATIONS.
20. FANS CAN BE EC DIRECT DRIVE OR VFD DRIVEN WITH BACKET CAPABILITY.
21. ROUTE CONDENSATE TO APPROVED DRAIN. SIZE LINE PER MECHANICAL CODE.
22. PROVIDE WITH TIE-DOWN SYSTEM TO SECURE AIR HANDLER TO CURB. TIE-DOWN SYSTEM SHALL COMPLY WITH CURRENT FLORIDA BUILDING CODE REQUIREMENTS FOR ROOF MOUNTED EQUIPMENT.
23. CURB AND UNIT SHALL BE ANCHORED TO MEET ALL WIND REQUIREMENTS FOR NAPLES, FLORIDA. MANUFACTURER SHALL PROVIDE SUPPORTING ANCHOR CALCULATIONS FOR MOUNTING OF THE CURB TO THE STRUCTURE AND THE UNIT TO THE CURB.
24. PROVIDE WITH INVERTER SCROLL COMPRESSORS, HOT GAS BYPASS, AND VARIABLE SPEED SUPPLY AND CONDENSER FANS.

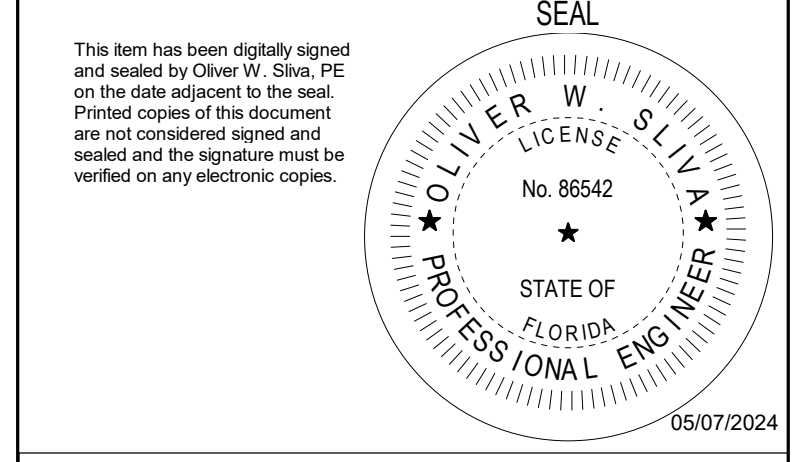
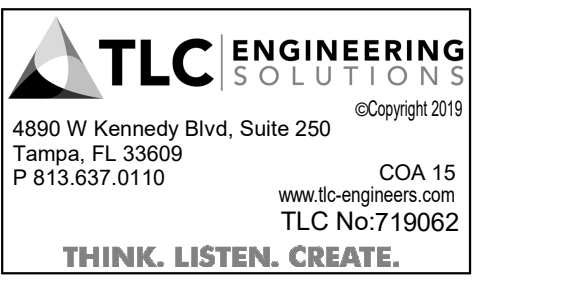
DUCTLESS DX SPLIT SYSTEM SCHEDULE

MARK	MODEL		SERVICE	kBtu/h	SEER	SA CFM	ELECTRICAL DATA			COMPRESSOR		UNIT WEIGHT (LBS)		NOTES	
	INDOOR	OUTDOOR					MCA	MOC	VOLTS/PHASE	RLA	TYPE	REF TYPE	INDOOR		OUTDOOR
AC-1	PKA-A18HA6	PUZ-A18NH46	109 C VEST.	18	15.3	370	13	20	208/1	12	TWIN ROTARY	R410A	30	95	

NOTES:
1. BASIS OF DESIGN IS MITSUBISHI.
2. PROVIDE WITH 208V/1Ø CONDENSATE PUMP.
3. PROVIDE WITH FACTORY MOUNTED DISCONNECT.
4. INDOOR UNITS RECEIVE POWER FROM OUTDOOR UNITS THROUGH FIELD SUPPLIED INTERCONNECTED WIRING.
5. PROVIDE CONDENSER COILS WITH SEA COAST COATING, WITH 5,000 HR SALT SPRAY RATING.

SCHENKELSHULTZ
ARCHITECTURE

200 E. Robinson Street
Suite 300
Orlando, FL 32801
voice 407-872-3322
fax 407-872-3303
schenkelschultz.com
SS Lic. No. -AA-C000937
CONFIDENTIAL. COPYRIGHT 2024 SCHENKEL & SHULTZ INC.
SEE WWW.SCHENKELSHULTZ.COM/COPYRIGHT. FOR POLICY AND INFORMATION.



REVISIONS		
MARK	DESCRIPTION	DATE

NORTH ROAD TERMINAL RENOVATION 2024

500 TERMINAL DRIVE
NAPLES, FL 34104

Naples AIRPORT AUTHORITY

NAPLES AIRPORT AUTHORITY
160 AVIATION DRIVE NORTH
NAPLES, FL 34104

COMM NO.: 2024701
ISSUE DATE: 05/07/2024
DRAWN BY: KMC CHECKED BY:

MECHANICAL SCHEDULES

M301

SCHENKELSHULTZ
ARCHITECTURE

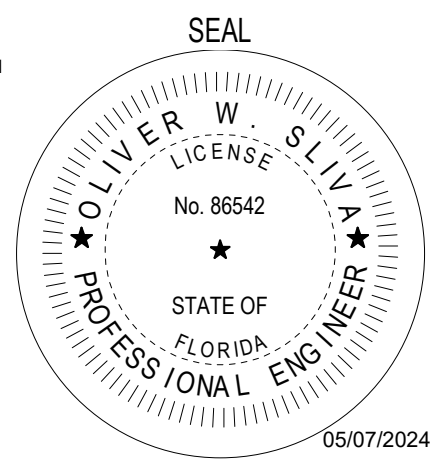
200 E. Robinson Street
Suite 300
Orlando, FL 32801
voice 407-872-3322
fax 407-872-3303
schenkelshultz.com
SS Lic. No. AA-C000937
CONFIDENTIAL COPYRIGHT 2020 SCHENKEL & SHULTZ INC.
SEE WWW.SCHENKELSHULTZ.COM FOR POLICY AND INFORMATION

TLC ENGINEERING
SOLUTIONS

4890 W Kennedy Blvd, Suite 250
Tampa, FL 33609
P 813.637.0110

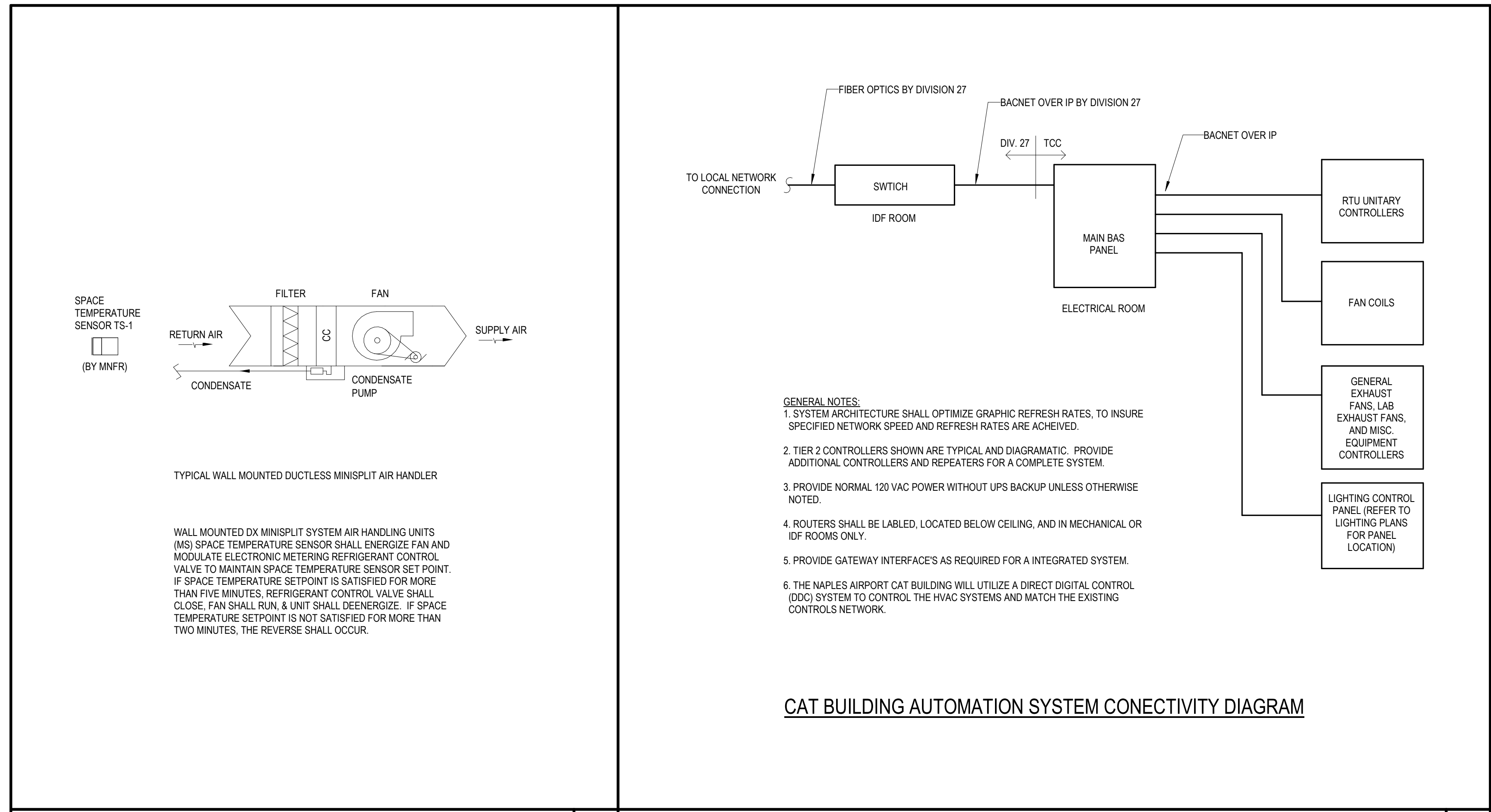
COA 15
www.tlc-engineers.com
TLC No: 719062
©Copyright 2019

THINK. LISTEN. CREATE.

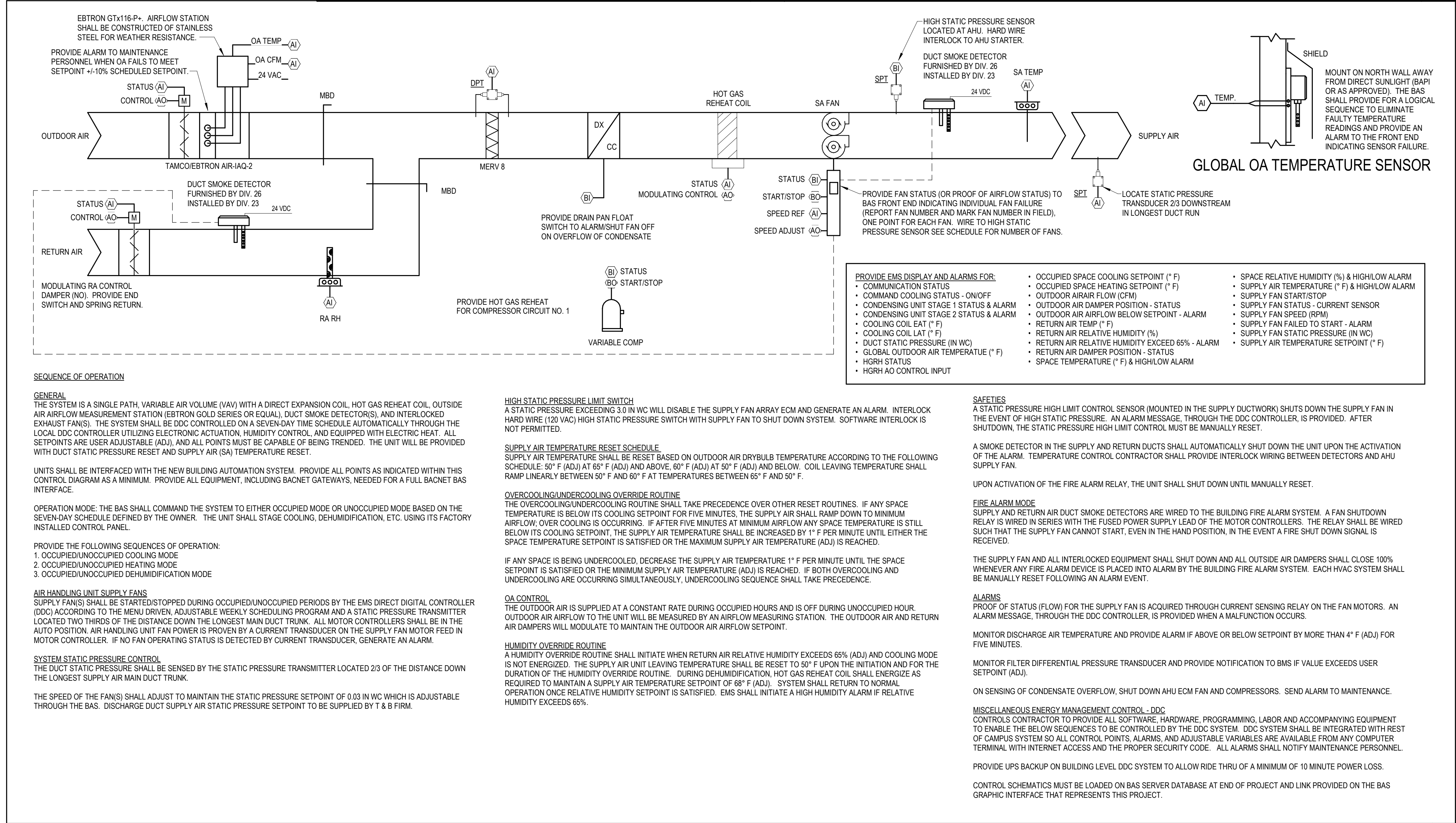


This item has been slightly copied and sealed by Tyler W. Sliva, PE. Printed copies of this document are not considered signed and sealed and the signature must be verified on any electronic copies.

MARK	DESCRIPTION	DATE



TYPICAL WALL MOUNTED DUCTLESS MINISPLIT AIR HANDLER 3 SYSTEM ARCHITECTURE DIAGRAM 2



TYPICAL SINGLE PATH VARIABLE AIR VOLUME DX AHU CONTROL DIAGRAM 1

NORTH ROAD TERMINAL RENOVATION 2024

500 TERMINAL DRIVE
NAPLES, FL 34104

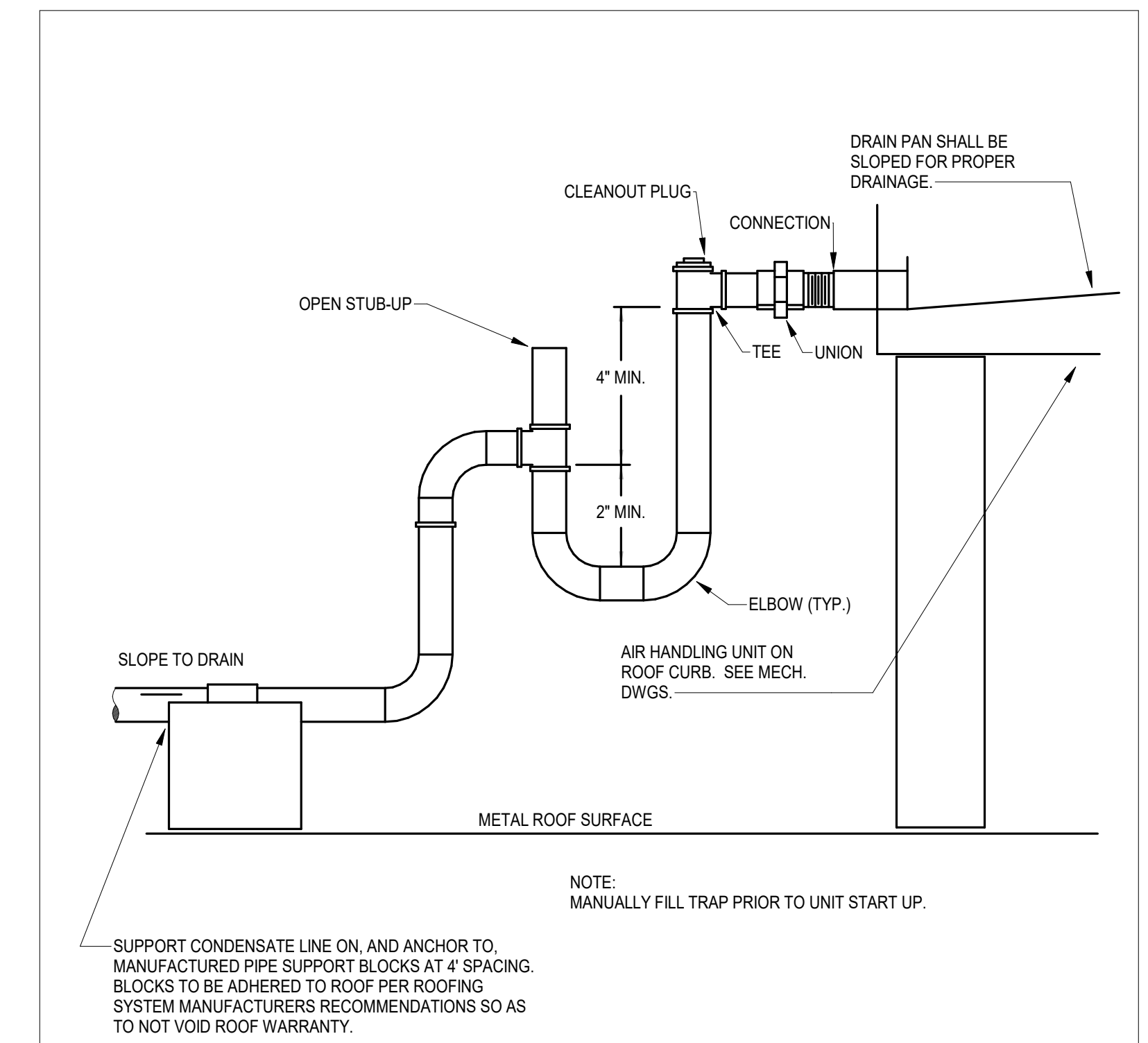


NAPLES AIRPORT AUTHORITY
160 AVIATION DRIVE NORTH
NAPLES, FL 34104

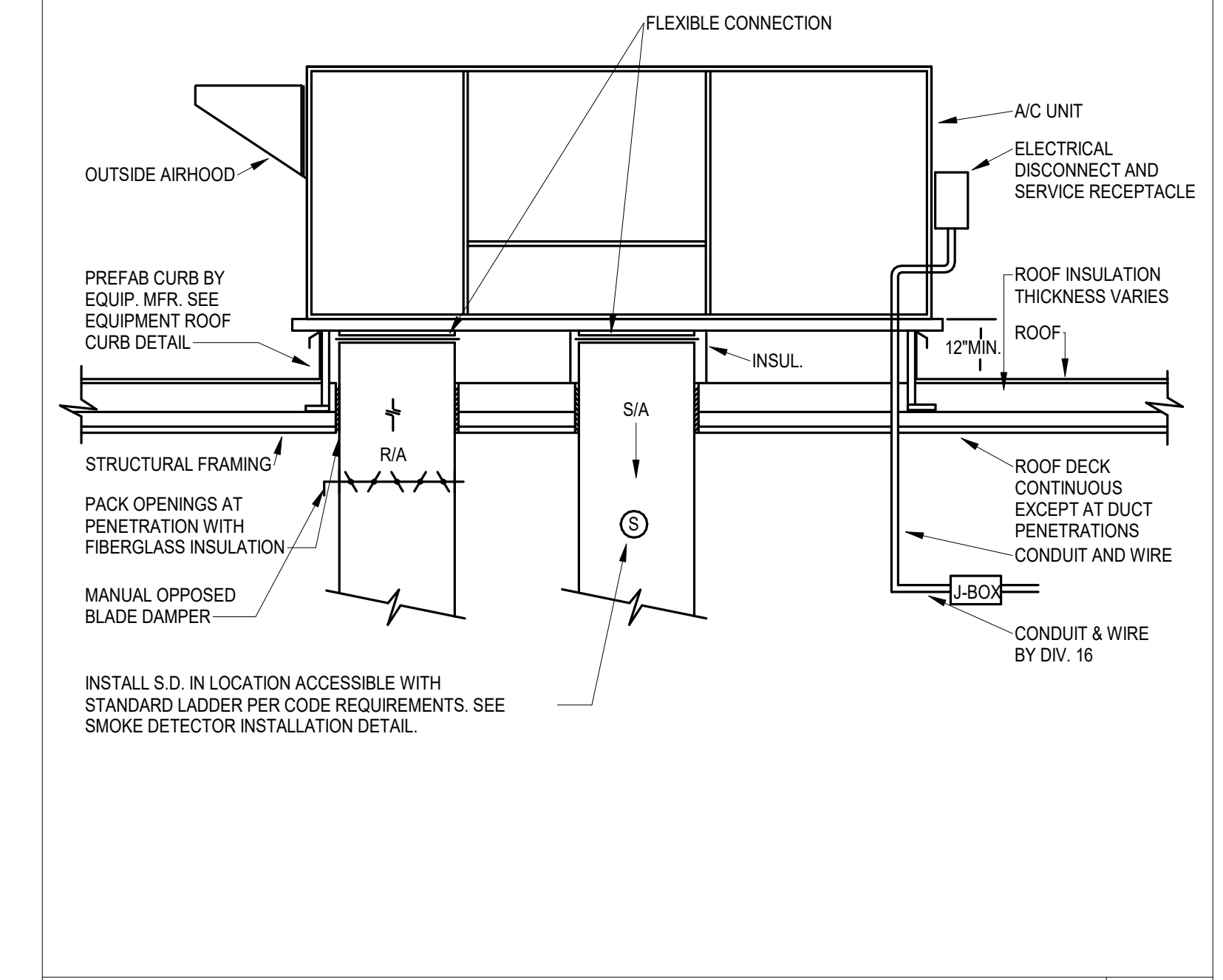
COMM NO.: 2024701
ISSUE DATE: 05/07/2024
DRAWN BY: KMC CHECKED BY:

MECHANICAL CONTROLS

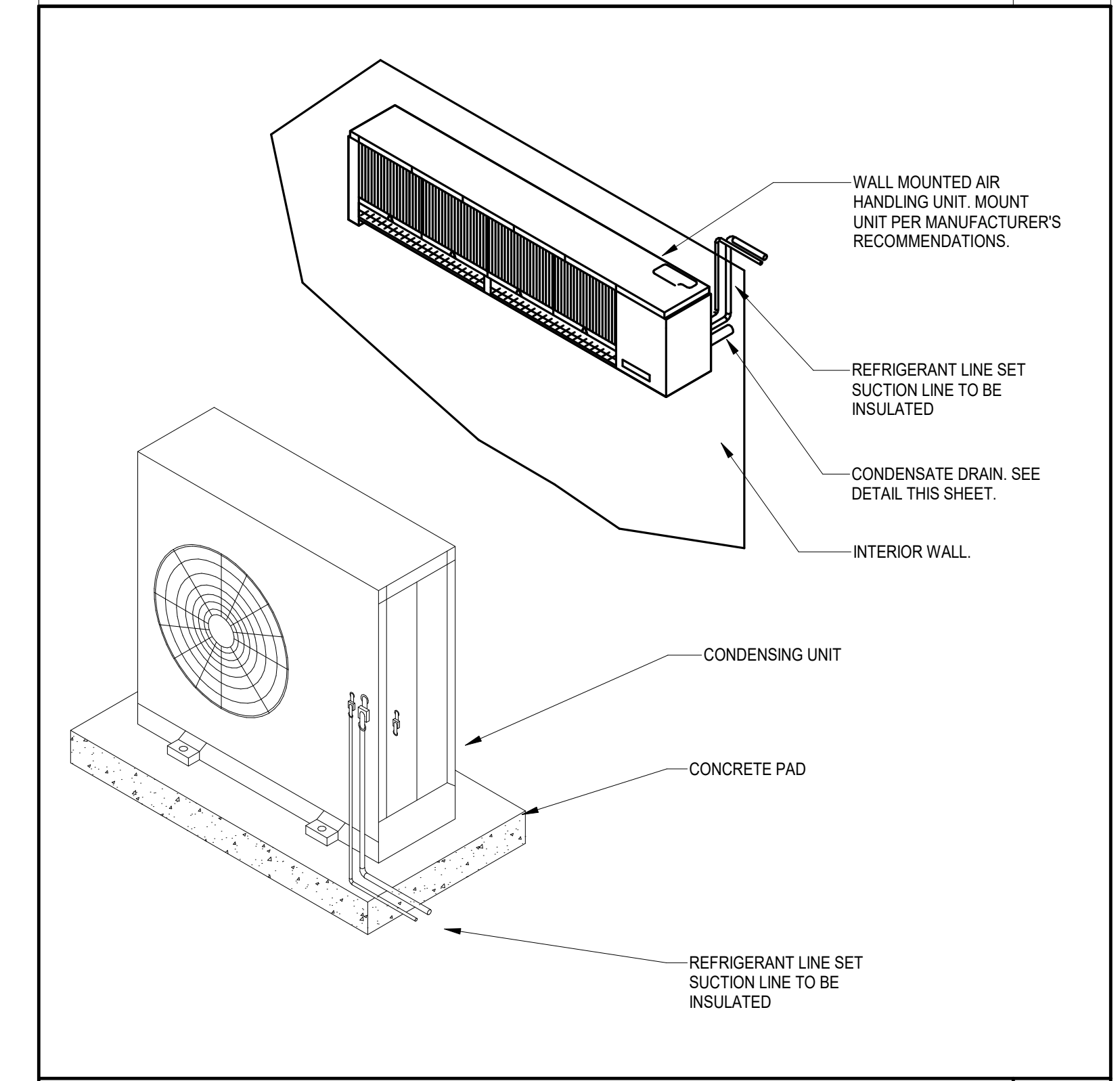
M401



CONDENSATE DRAIN
No Scale **3**



ROOFTOP UNIT
No Scale **2**



WALL MOUNTED AHU SPLIT SYSTEM
No Scale **1**

SCHENKELSHULTZ
ARCHITECTURE

200 E. Robinson Street
Suite 300
Orlando, FL 32801
voice 407-872-3322
fax 407-872-3303
schenkelshultz.com
SS Lic. No. -AA-C000937
CONFIDENTIAL COPYRIGHT 2023 SCHENKEL & SHULTZ INC. SEE WWW.SCHENKELSHULTZ.COM FOR POLICY AND INFORMATION.

TLC ENGINEERING SOLUTIONS
4890 W Kennedy Blvd, Suite 250
Tampa, FL 33609
P 813.637.0110
COA 15
www.tlc-engineers.com
TLC No: 719062
THINK. LISTEN. CREATE.

This item has been slightly signed and sealed by Oliver W. Silva, PE on the date adjacent to the seal. Printed copies of this document are not considered signed and sealed and the signature must be verified on any electronic copies.

SEAL
OLIVER W. SILVA
No. 86542
STATE OF FLORIDA
PROFESSIONAL ENGINEER
05/07/2024

REVISIONS		
MARK	DESCRIPTION	DATE

NORTH ROAD TERMINAL RENOVATION 2024

500 TERMINAL DRIVE
NAPLES, FL 34104

Naples AIRPORT AUTHORITY

NAPLES AIRPORT AUTHORITY
160 AVIATION DRIVE NORTH
NAPLES, FL 34104

COMM. NO.: 2024701
ISSUE DATE: 05/07/2024
DRAWN BY: KMC CHECKED BY:

MECHANICAL DETAILS

M501